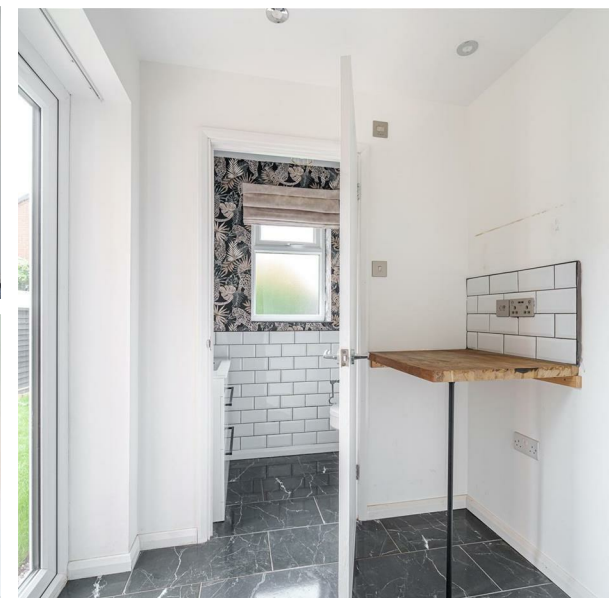


68 Kingfisher Road, Mountsorrel, LE12 7FG  
£1,350 Per month  
Council Tax Band: C

H&H  
BESPOKE



Welcome to this charming property located on Kingfisher Road tucked away in a quiet cul de sac in the picturesque village of Mountsorrel. This delightful house boasts a spacious 861 sq ft of living space, perfect for a growing family or those who love to entertain.

Upon entering, you are greeted by a cosy reception room, ideal for relaxing after a long day or hosting guests. The property features three inviting bedrooms, offering plenty of space for a peaceful night's sleep or a tranquil home office setup.

Built in 2000, this modern house combines contemporary amenities with a homely feel. The property also benefits from parking space for two vehicles, ensuring convenience for you and your guests.

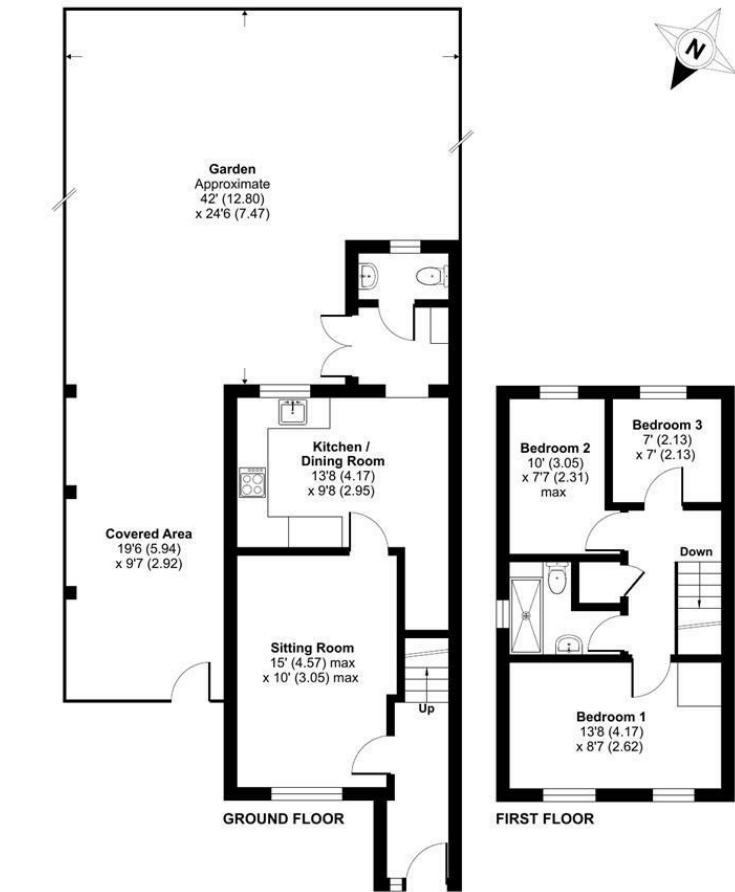
Located in the heart of Mountsorrel, this property offers a wonderful opportunity to become part of a vibrant community while enjoying the tranquillity of village life. Don't miss out on the chance to make this



13 Sherrard Street, Melton Mowbray, Leicestershire, LE13 1XH  
0333 242 3760  
Beth@houseandhomebespoke.co.uk

Kingfisher Road, Mountsorrel, Loughborough, LE12

Approximate Area = 766 sq ft / 71.1 sq m  
For identification only - Not to scale



Floor plan produced in accordance with RICS Property Measurement 2nd Edition, Incorporating International Property Measurement Standards (IPMS2 Residential). © ritchecom 2024. Produced for House and Home Bespoke. REF: 1209147

Energy Efficiency Rating		Current	Potential
Very energy efficient - lower running costs			
(92 plus) <b>A</b>			<b>86</b>
(81-91) <b>B</b>			
(69-80) <b>C</b>		<b>73</b>	
(55-68) <b>D</b>			
(39-54) <b>E</b>			
(21-38) <b>F</b>			
(1-20) <b>G</b>			
Not energy efficient - higher running costs			
<b>England &amp; Wales</b>		EU Directive 2002/91/EC	